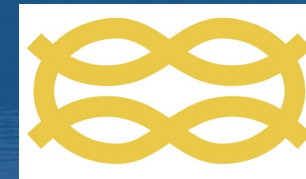


2022

ANNUAL MEETING

RECREATIONAL
BOATING ASSOCIATION
OF WASHINGTON



www.rbaw.org

The voice of Northwest boating



**HAS ANYTHING
CHANGED??**

**Lorena & Leonard Landon
Managing Editors, Waggoner Guide**

What's Changed?

MUCH HAS CHANGED | MUCH NEEDED CHANGES



Today's Challenges

Boats & Boaters

What's Happening with Destinations

Tribal Interests

WA Waters Accessible to Foreign Recreational Boaters



Recreational Boating Association of Washington

www.rbaw.org



What's Changed?

RECREATIONAL BOATING CHALLENGES THEN & NOW

Then

Pre-GPS, Chart plotters, Moving Maps

Free Movement; Exploring; Gunkholing

Situational Awareness (Where am I?)

Now

Wide Variety of Water Activities

Visibility and Scrutiny

Increase in Stakeholders



What's Changed?

NEW GENERATIONS OF BOATS & BOATERS

Pandemic times introduced many people to recreational boating

Turnkey boats

Bigger boats



WHAT'S CHANGED?

TRENDS IN BOATING & CRUISING

20 footitus

Chart Advances

Greater Safety





What's Changed?

WITHOUT OWNING A BOAT

Charters

Bareboat
Crewed
Segment/Organized
Charters

Groups

Flotillas
Rendezvous

Boat Clubs

Shared Boats
Rented Boats





WHAT'S CHANGED

KNOWING WHERE & HOW TO GO

Government Regulations

Environmental Concerns

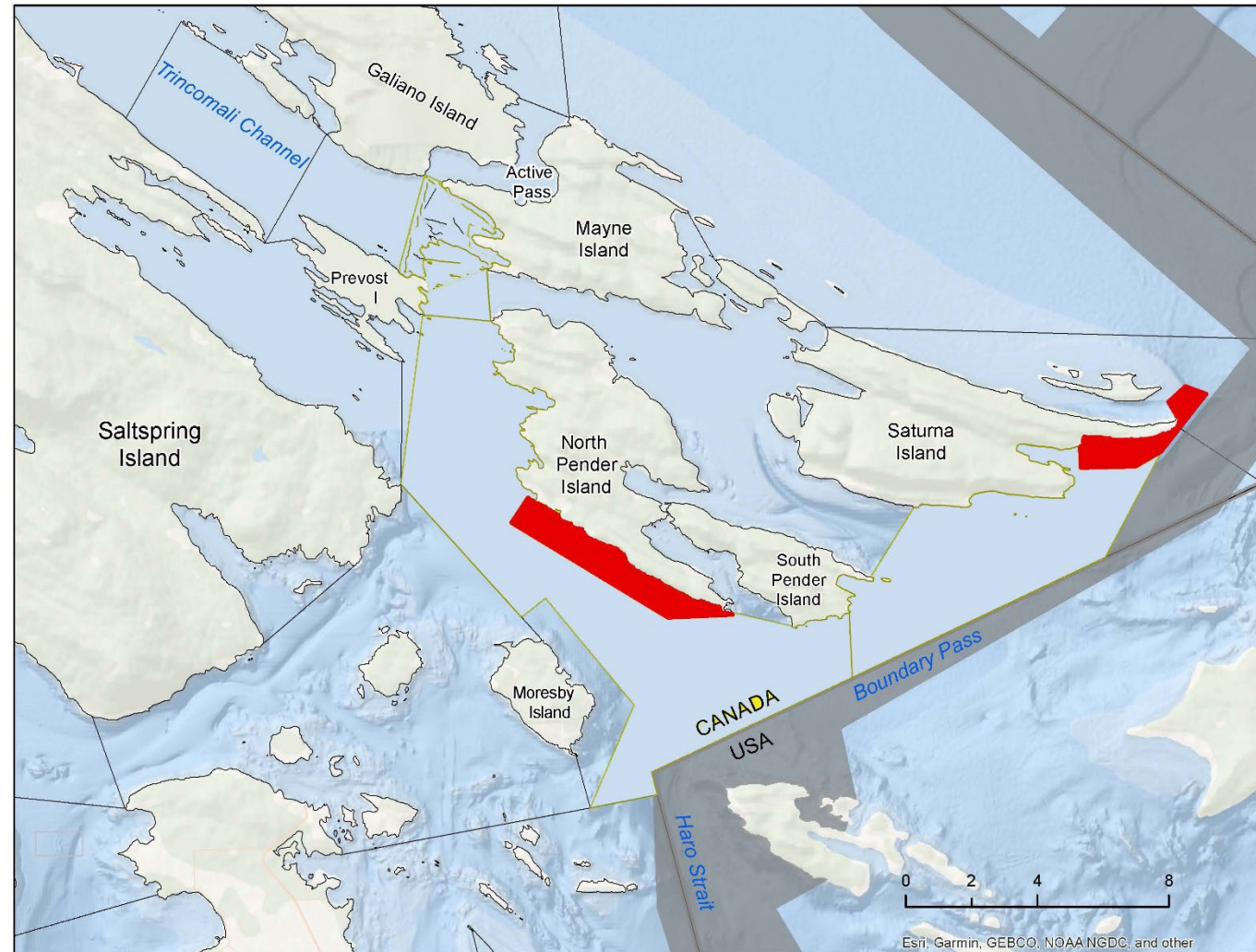
Wildlife Topics

Stakeholder Interests



What's Changed?

WHERE NOT TO GO



2022 Gulf Islands management measures

Canada

www.rbaw.org



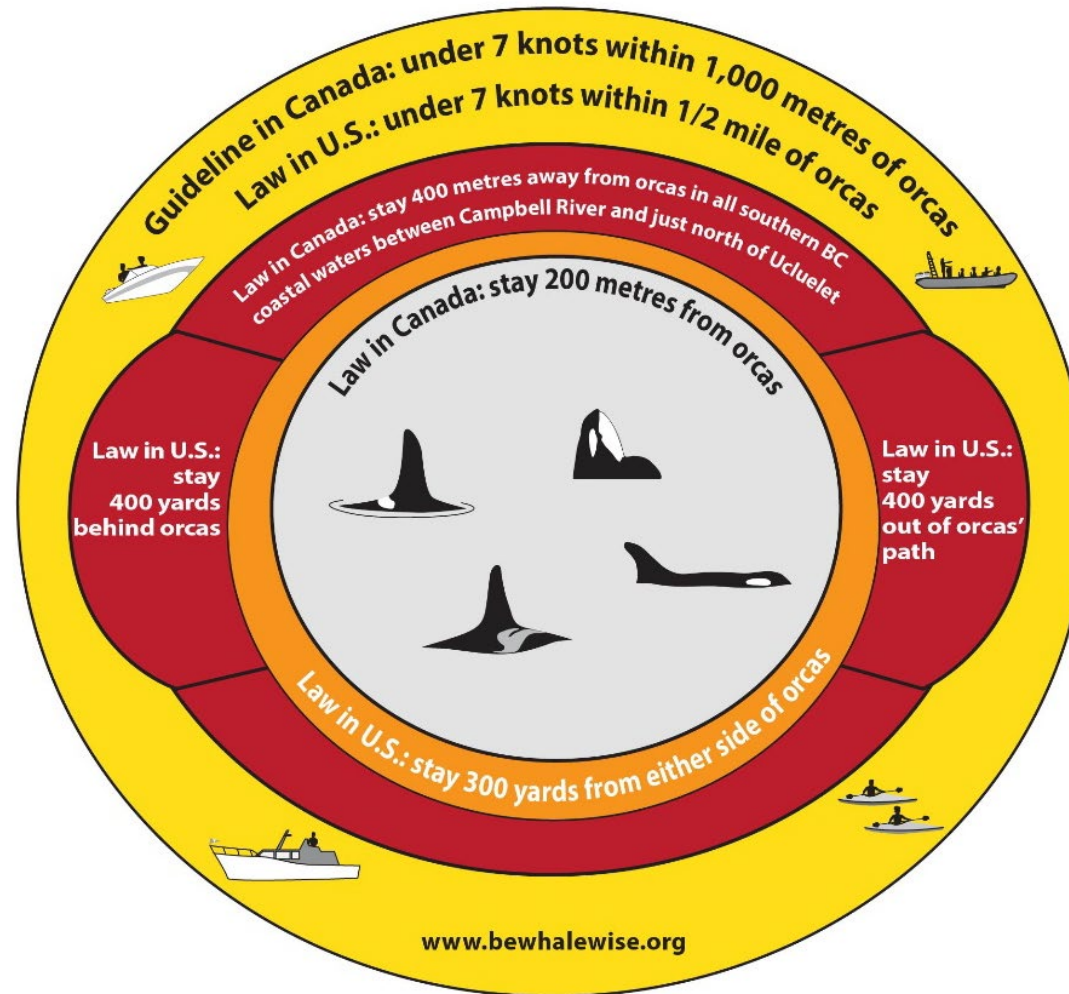
What's Changed?

WHERE NOT TO GO



What's Changed?

WHAT NOT TO DO



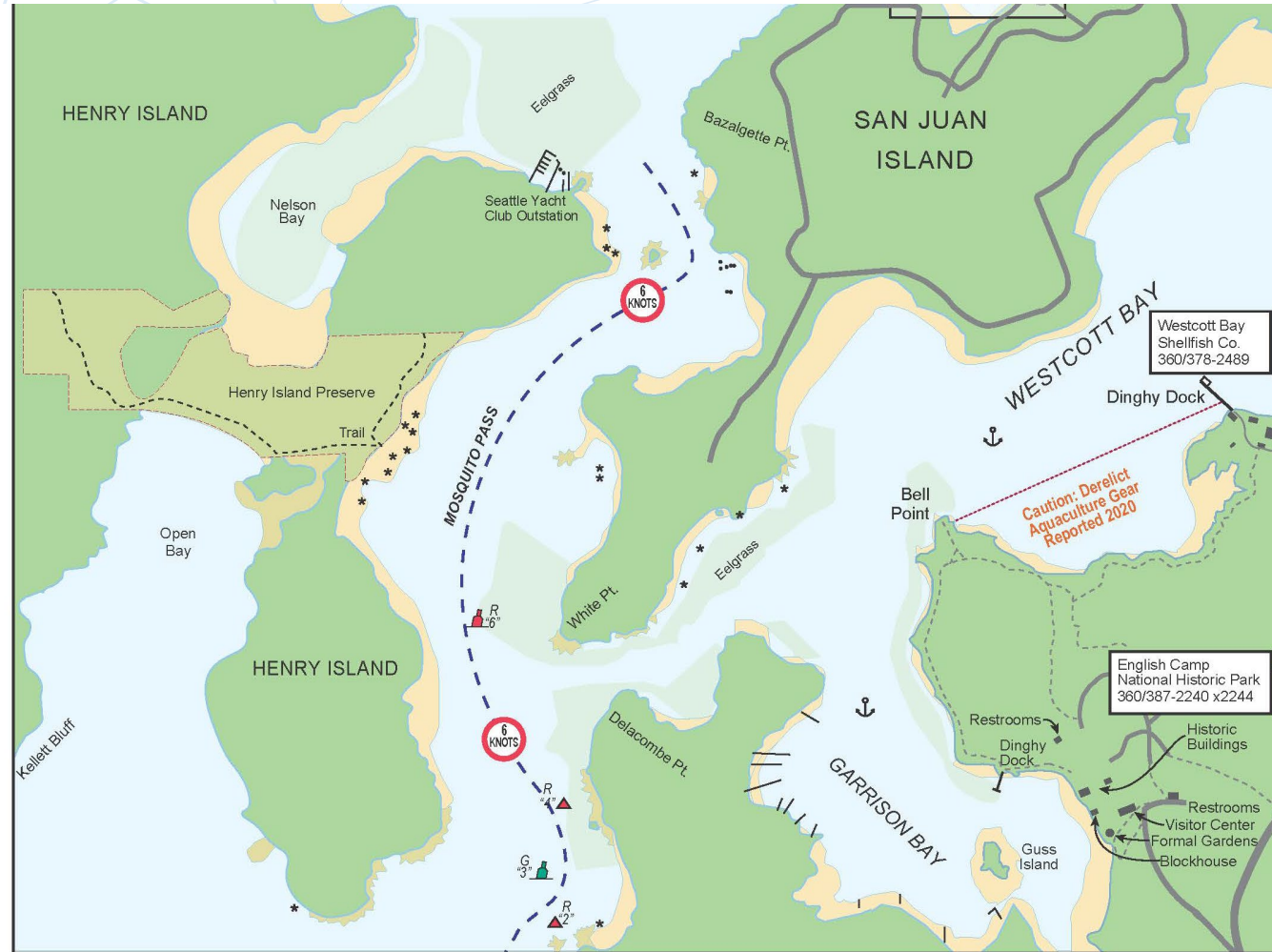
Keep 200 metres away from whales, dolphins or porpoises if they are resting or with their calf;
and 100 metres/yards no approach zone for all other marine mammals in US & Canada.

www.rbaw.org



What's Changed?

SPEED LIMIT, NO WAKE ZONES



Roche Harbor, Westcott Bay, Garrison Bay, & Mosquito Pass



What's Changed?

SPEED LIMIT, NO WAKE ZONES

REFERENCE PAGES

514

SPEED LIMIT AND NO WAKE ZONES

Speed limit and boat wake control zones exist throughout our boating region. Few if any are depicted on our nautical charts. Often, but not always, the speed zones are marked by on-water buoys or signage along the shore. Signage for No Wake zones is often private to protect nearby docks or marinas. Speed limits and no wake rules are imposed by a variety of different jurisdictions, including federal government, state/provincial government, port authorities, county government, and local/city government. Some are suggested or requested speed and wake control areas. Various controlling authorities, including police, enforce speed limit and no wake zones for the safety of people, boats, marinas, and shorelines. Boaters are expected to operate their vessels in compliance with these regulations.

NOTE: This is not a complete list but does include many of the commonly visited locations.

Puget Sound	Budd Inlet, Olympia	7-knot speed limit from Olympia Shoal to an East/West line at the North tip of Port of Olympia peninsula, where a 5-knot limit begins and extends south in both the east and west channels. No Wake speed limit in all City of Olympia waters.
Puget Sound	Amsterdam Bay, Anderson Island	5-mph No Wake speed is requested to protect shoreline.
Puget Sound	Foss Waterway, Tacoma	A No Wake speed limit exists throughout the Thea Foss Waterway.
Puget Sound	Commencement Bay Waterways	5-mph speed limit in the Hylebos, Blair, St. Paul, Milwaukee, Sicum, and Middle waterways off Commencement Bay.
Puget Sound	Gig Harbor	5-mph No-Wake speed limit is enforced in Gig Harbor and 200 feet outside the entrance.
Puget Sound	Salmon Bay, Ship Canal, and Lake Union	7-knot No Wake speed limit is enforced from Hiram M. Chittenden Locks to Webster Point.
Puget Sound	Washington Narrows between Sinclair Inlet and Dyes Inlet	A Minimum Wake speed is requested to protect shoreline and boats moored at the marina.
Puget Sound	Liberty Bay, Poulsbo	5-knot speed limit on the north half of the bay; a marked buoy signals the south end of the speed limit zone.
Puget Sound	Keyport	An on-shore sign at the Keyport Naval Research facility marks a No Wake speed limit zone in front of the Naval facility docks.
Puget Sound	Eagle Harbor	5-knot speed limit begins at buoy.
Puget Sound	Port Ludlow	5-mph No Wake speed limit is in effect throughout Port Ludlow and applies to all vessels, including dinghies.
Swinomish Channel	La Conner	A No-Wake Zone extends from Hole-In-The-Wall on the south end to the railroad swing bridge on the north end.
Puget Sound & San Juan Islands	Orca Whales	A 7-knot No Wake speed limit is required and enforced within one-half nautical mile of Southern Resident Orca Whales within inland Washington waters.
San Juan Islands	Pole Pass	7-mph speed and low-wake zone marked by white cylindrical buoys extends 1/3 mile northwest of Pole Pass then eastward and southward to Bell Island; enforced by the County Sheriff.
San Juan Islands	Mosquito Pass	7-mph speed and low-wake zone extends throughout Mosquito Pass; enforced by County Sheriff.
San Juan Islands	Fisher Bay Channel	5-mph speed limit zone extends through the entrance channel.
Gulf Islands, Strait of Juan de Fuca, Fraser River Outlets	Killer (Orca) Whales	7-knot or slower speed is requested of all vessels when within 1 km (1/2 mile) of Killer (Orca) Whales.
Gulf Islands	Victoria Harbour	7-knot speed limit begins at Ogden Point and extends to Shoal Point, where a 5-knot speed limit begins and extends throughout the inner harbour.
Gulf Islands	Oak Bay, near Victoria	4-knot speed limit is in effect throughout the harbour area north of the breakwater and west of Mary Tod Island.
Gulf Islands	Brentwood Bay/Tod Inlet	4-knot speed limit exists from a line between the Brentwood Ferry Terminal to the northeast boundary of Gowlland Tod Provincial Park (approximately the unnamed point on the peninsula west of Daphne Islet.)

In general:

- Speed should be reduced and wake minimized when within 100 yards/meters of shore.
- Reduce speed and minimize wake when near beaches, swimmers, kayakers, canoes, and divers.
- A "No Wake 5-knot speed zone" requires a speed that produces a minimized wake which may be less than the 5-knot maximum.
- Kill your transom wake by briefly halting outside a marina entrance.
- Big fast boats should be especially careful with their powerful large wakes.
- Speed limit laws in BC are often legislated in km/hour and have been converted and rounded.



SPEED LIMIT AND NO WAKE ZONES

Gulf Islands	Pender Canal, between North Pender and South Pender Islands	5-knot speed limit exists from Ainslie Point to Mortimer Spit.
Gulf Islands	Ganges Harbour	5-knot speed limit zone throughout the harbour begins at a mid-channel buoy near Rock Point.
Gulf Islands	Tsehum Harbour, Sidney	A No Wake, speed limit of 4-knots is in force in Tsehum Harbour.
Gulf Islands	Birds Eye Cove/Maple Bay	A white buoy entering Birds Eye Cove from Maple Bay marks a 5-knot No Wake speed limit zone.
Gulf Islands	Nanaimo, Newcastle Channel	5-knot speed limit zone protects marinas along Newcastle Channel from Bate Pt. to Shaft Pt.
Gulf Islands	Nanaimo Harbour	5-knot speed limit is in effect within 150 meters of shore and when near or around anchored vessels, floatplanes, and beach areas.
Vancouver	False Creek	5-knot No Wake speed limit extends throughout False Creek Inlet and begins off Sunset Beach.
Vancouver	Vancouver Harbour, First Narrows	A 15-knot speed limit in the waters around First Narrows, Lions Gate Bridge.
Vancouver	Coal Harbour	5-knot speed limit is enforced in Coal Harbour.
Vancouver	Indian Arm North	5-knot speed limit begins at Croker Island and extends to the north end of Indian Arm.
Vancouver	Indian Arm South	5-knot speed limit begins at Boulder Island and extends north to Jug Island.
Vancouver	Indian Arm, Bedwell Bay	5-knot speed limit is enforced in Bedwell Bay.
Sunshine Coast	Princess Louisa Inlet	A no-wake speed limit is in effect throughout the inlet.
Desolation Sound	Pendrell Sound, East Redonda Island	3-knot speed limit is in effect throughout the north half of Pendrell Sound to protect seed oyster growing operations.
Desolation Sound	Gorge Harbour	A No Wake speed limit is in effect throughout the harbour.
Johnstone Strait	Cordero Channel, Cordero Lodge	A No Wake speed is requested when passing Cordero Lodge.
North Vancouver Island	Port Hardy	3-knot speed limit exists in the Inner Harbour.
West Coast Vancouver Island	Bull Harbour	3-knot speed limit is requested inside the harbour.
Northern B.C. Coast	Prince Rupert	5-knot speed zone is enforced within 600 yards of the harbour's south shore from Fairview Container Terminal to Ritchie Point. No buoys mark the zone.
Northern B.C. Coast	Porpoise Harbour, Prince Rupert	5-knot speed limit exists throughout the harbour.
Northern B.C. Coast	Venn Passage, Prince Rupert area	Two 5-knot speed limit zones in Venn Passage: off the airport dock on Digby Island, and off the village of Metlakatla.
Southeast Alaska	Tongass Narrows, Ketchikan	7-knot speed limit for vessels over 23 feet extends from Buoy 9 in the north to the East West Channel regulatory markers to the south.
Southeast Alaska	Gastineau Channel, Juneau Harbor	5-knot speed limit within Juneau Harbor; 7-knot speed limit in Gastineau Channel from Juneau Island and Douglas Harbor north to Juneau Harbor.
Southeast Alaska	Auke Bay, Juneau	5-knot speed limit within 1,000 feet of the harbor breakwater and entrance 4-knot speed limit within the breakwater.
Southeast Alaska	Sitka Harbor	5-mph speed limit throughout the harbor; and No Wake within the marinas.

REFERENCE PAGES

515



What's Changed?

EELGRASS



Roche Harbor, Westcott Bay, Garrison Bay, & Mosquito Pass





WHAT'S CHANGED

DESTINATIONS

Marinas

Less for More – Fewer Marinas
Capacity Issues

Marine Parks

More Users



WHAT'S CHANGED

DESTINATIONS: MARINAS



No Longer Available

Port Harvey (Broughtons)

Kwatsi Bay (Broughtons)

Shawl Bay (Broughtons)

Greenway Sound Resort (Broughtons)

Cordero Lodge (Johnstone Strait)

Big Bay Lodge (Discovery Passage)

Seascape Resort (Campbell River)





WHAT'S CHANGED

DESTINATIONS : MARINAS



New Ownership/Management

Elliott Bay Marina

Lakebay Marina

April Point (Campbell River)

Echo Bay (Boughtons)

Shearwater (Northern B.C.)

Victoria International Marina (Victoria)

Lovric Marina (Anacortes)



WHAT'S CHANGED

DESTINATIONS : MARINAS



Upgrade/Rebuild

Oakland Bay Marina (South Sound)
Lakebay Marina (Puget Sound)
Quarter Master Harbor (South Sound)
Des Moines Marina (Puget Sound)
Poulsbo Marina (Puget Sound)
Everett Marina (Puget Sound)
Pt Hudson (North Puget Sound)
Victoria International Marina (Victoria)
Port Browning Marina (Gulf Islands)
Silva Bay Marina (Gulf Islands)
Salt Spring Marina (Gulf Islands)
Boat Harbour (Gulf Islands)



What's changed

MARINA STAYS : INSURANCE REQUIREMENTS

- \$2 million Liability coverage
- Evidence required
- Guest/Transient Overnight
- Increasingly in B.C. marinas
- Boat Policy + Umbrella
- Evidence of Insurance Required at:
 - Ganges Marina
 - Harbour Authority of Salt Spring Island – Ganges & their other marinas
 - Fairwinds – Strait of Georgia
 - Port Alberni Harbour Authority Marinas -WCVI
 - Fisherman's Wharf – Campbell River

ALL NOTED IN 2023 WAGGONER GUIDE



The image shows a sample ACORD Certificate of Liability Insurance form. The form is titled "ACORD CERTIFICATE OF LIABILITY INSURANCE" and includes fields for "SITESP1", "OP ID: PB", and "DATE (MM/DD/YYYY)". The date is filled in as "04/09/12". The form contains a disclaimer stating that the certificate is issued as a matter of information only and does not constitute a contract. It also includes an "IMPORTANT" section regarding additional insureds and subrogation. The "PRODUCER" section lists "Jones Insurance Agency, Inc." with contact information. The "INSURED" section lists "Site Specific Contracting, Inc." with its address. The "COVERAGES" section lists "INSURER A: Cincinnati Insurance Company" and "INSURER B: Builders Mutual Ins Company" with their respective policy numbers. The form also includes fields for "CERTIFICATE NUMBER", "REVISION NUMBER", and "POLICY NUMBER".



What's changed

ANCHORING

Free format & Isolated Restrictions

Mats Mats Bay

False Creek

Port Moody DAA

Deep Cove DAA

Steveston No Anchoring

Boat Harbour Private Water Lot



What's changed

MOORING BUOYS

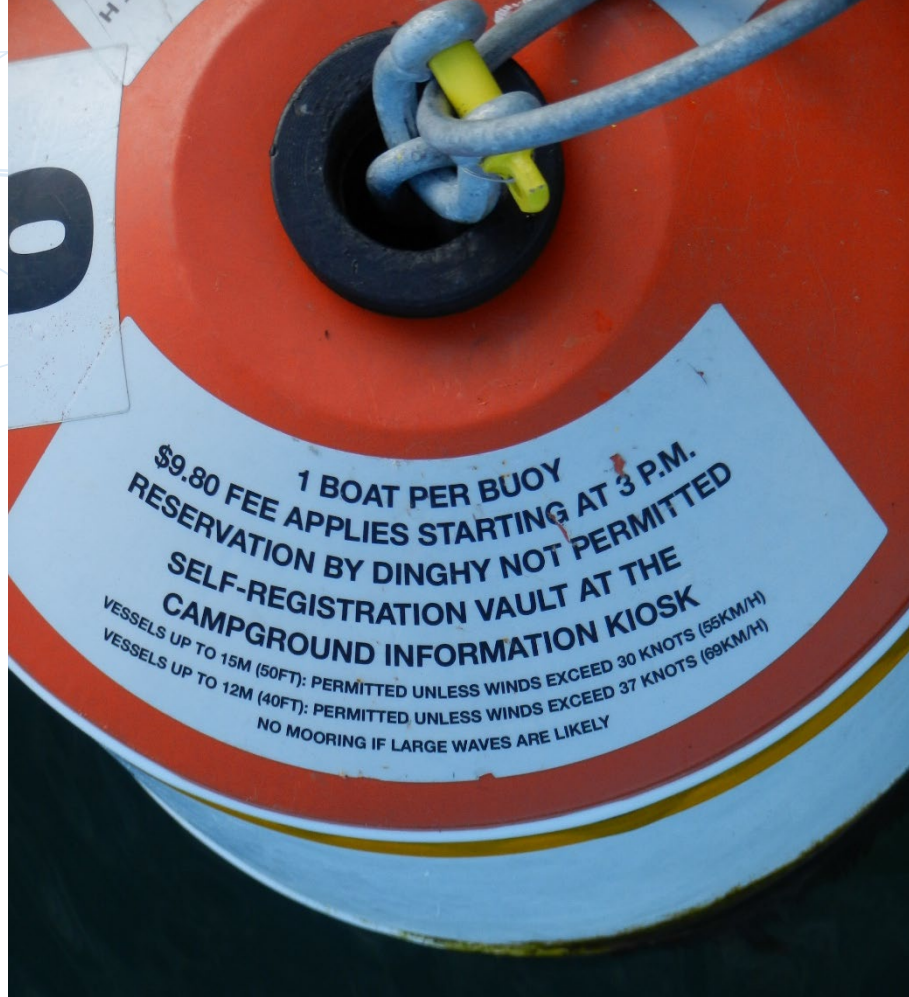
WA State Marine Parks

WA DNR

Gulf Islands Marine Parks

BC Marine Parks

Regional Municipal Parks



- Buoys Avoid Anchoring
- Sized for Larger Vessels
- Seabed Friendly Anchors
- Gulf Islands Park Buoys





What's changed

CHANGES THAT WOULD BE WELCOME

Marinas

More Marinas

More
Guest/Transient
Moorage

More Peak Season
Guest Moorage

Marine Parks

More Mooring Buoys

Upgraded Mooring Buoys

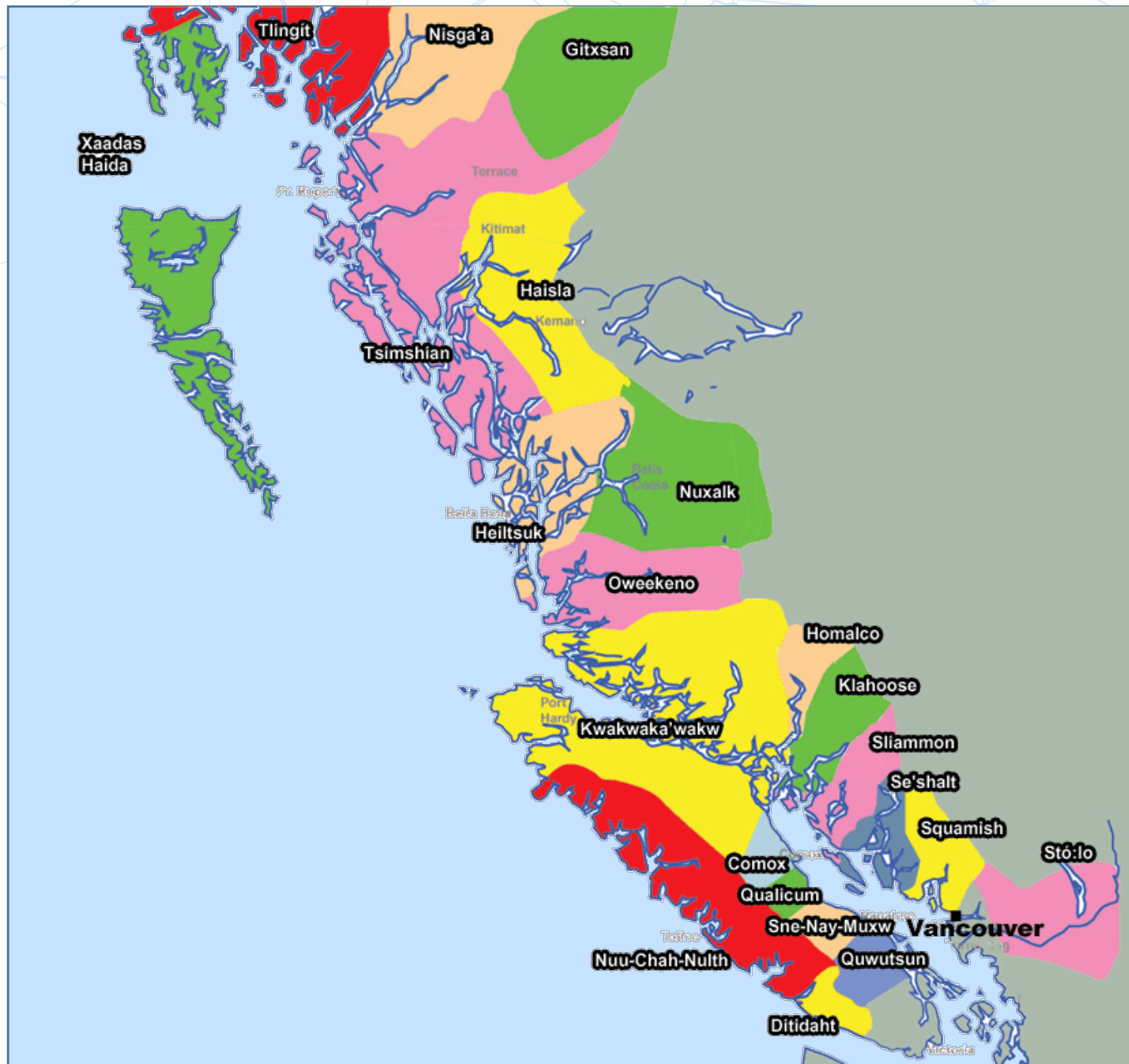
Anchorage

Shoreside Stern Tie
Pins



What's changed

TRIBAL LANDS OF B.C.



What's changed

TRIBAL : NAME CHANGES

- Queen Charlotte Islands
 - Haida Gwaii
 - Gwaii Haanas
 - Anthony Island – SGang Gwaay
 - Queen Charlotte City – Daajing Giids
- Gulf Islands
 - Kuper Island - Penelakut Island
 - Newcastle Island - Saysutshun
- Strait of Georgia
 - Sandy Island – Ja'ji7em Kw'ulh
- Sunshine Coast
 - Indian Arm Park – Say Nuth Khaw Yum
- Deception Pass Area
 - Kiket Island– Kukutali Preserve



What's changed

TRIBAL : WATCHMAN PROGRAMS & CONSERVANCIES

Gwaii Haanas – Haida Gwaii

5 historic watchman sites

Village Island – Broughtons

Keein Village – Bamfield - WCVI

Ahousat – Maquinna Marine Park

Glendale Cove Wildlife Preserve

Broughtons – Knight Inlet

Poison Cove/Mussel Wildlife Preserve

Northern B.C. - Fiordland

Khutze Inlet Wildlife Preserve

Northern B.C. – Inside Passage

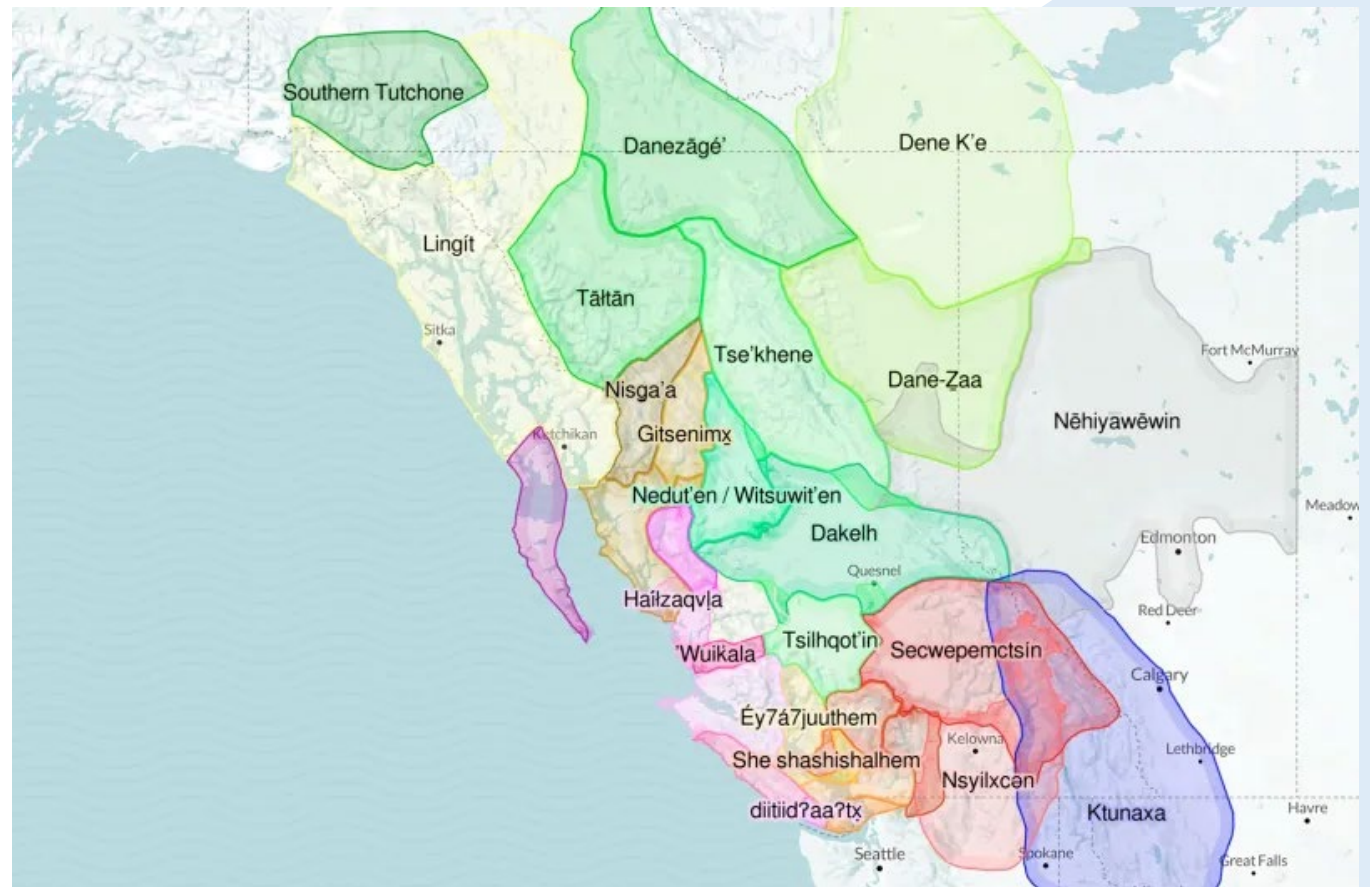


What's changed

TRIBAL : DEEP CULTURAL HISTORY

**Learn more about native
history and populations of the
area**

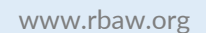
Appreciated by All



ACCESSIBILITY : REDUCING BARRIORS



WA Pilotage Requirements



What's changed

WILDLIFE CHANGES



What's changed

TIDAL CHALLENGES





What's changed

ACTION ITEMS

Organizations Take Action

Waggoner Can Help

Regional Coalition

Relevant and Visible to Boaters



Thank You

Lorena & Leonard Landon
Waggoner Guide – Managing Editors

** Please reference the 2023 Waggoner Guide for more information
about the items mentioned in this presentation

<https://waggonerguide.com/>

